

Oregon Trail Journal

Each group is a traveling family who packs their wagon and heads out West during the movement of Manifest Destiny. Each Journal will consist of **7** total pages including the cover There is a group and individual component.

Group Assignment - 20 points

- Page 1: **JOURNAL COVER**
 - Family Names
 - Graphic or picture
- Page 2: **PLANS**
 - A sketch of your wagon
 - Map of the Oregon Trail
 - Detailed description of one stop.
- Page 3: **PACKING LIST**
 - A list of supplies with weight
 - A list of food with weight

Individual Assignment - 30 points each

- Pages 4-7: **4 INDIVIDUAL ENTRIES**
 - ***One*** per group member
 - ***Essential Questions***: must answer all for each entry (see attached pages)
 - ***Picture or Artifact***: must include at least one for each entry, you can add more and it is HIGHLY recommended
 - Use the attached pages to help you create each entry

Grading

- Read the questions and instructions for each journal entry carefully.
- You will be graded on the accuracy of your entries and the details you provide.
- Be creative, but make sure your information is based on **ACCURATE, HISTORICAL FACTS.**

Pages 2 & 3: Map and Wagon

Use the following page to help you with graphics, sentence starters, and list makers.

A small picture/sketch of your wagon:

- **Options:**
 - You can use the wagon on the next page. Cut it out neatly and paste it into your journal.
 - You can print a wagon. Try to add in your own sketches, touches.
 - You can sketch a wagon.
- **Essential Labels:**
 - You must HAND LABEL 5 parts of the wagon

A Map of the Oregon Trail:

- **Options:**
 - You can use the map on the next page. Cut it out neatly and paste it into your journal.
 - You can find and print a map online (google Oregon Trail Map)
 - If you print a map or use the one below, add your own touches like sketches, pictures, rivers, mountains, etc.
 - You can draw your own map.
- **Essential Labels:**
 - What city you started your journey
 - Territories you traveled through (like Chimney Rock and Alice Springs)
 - Where you ended your journey

Detailed Description of One Stop:

- **Essential Questions:**
 - Where is the stop? What territory? Is it near mountains, rivers, etc.?
 - Describe the stop. Explain your first impression of the stop
 - Explain why pioneers would stop here. Why did you stop here?
 - The stop must be a place you labeled on your map of the Trail
 - Make sure you add a graphic, sketch, or printed picture.
- **Research Options:**
 - Websites: Google stops on the Oregon Trail
 - www.historyglobe.com/ot/otmap2.htm
 - www.legendsofamerica.com/we-oregontrail.html
 - <http://oregontrail101.com/sites.html>

List of Supplies/Food:

- Use your packet pages to help. List the 10 most important items.
- Add pictures of a few of the items.

Page 4: Your Traveling Family and Daily Life

Assigned to: _____

Use the following as a checklist

- **Essential Questions:**
 - Describe the group (your family) that you are traveling with on the trail.
 - Explain why you are leaving home
 - Choose one or MORE from the following list, you can combine ideas, most people left for MANY reasons.
 - Economic reasons:
 - New jobs, opportunities for work, search for gold, etc.
 - Better climate, fertile land
 - Look up the weather/land in the state you started from and the weather in Oregon
 - Did you read pamphlets about the “pioneer’s Paradise”?
 - Check out ads for Oregon country – did they convince you to move?
- **Ideas for research:**
 - Google advertisements for Oregon 1800s. you can print them to add to page
 - Make sure you add a graphic, sketch, artifact, or printed picture.
- **Make sure to add a graphic, sketch, artifact, or printed picture**



Journal Page 4 Rough Draft: Your Traveling Family and Daily Life

Green Introductory Sentence:

| |
|---|
| Our great adventure to Oregon began with excitement and anticipation! |
| |

Yellow Star Ideas:

*My family

| |
|-------------------------------|
| Yellow: My family consists of |
| |
| |

| |
|---------------------------------|
| Red: Details about your family: |
| • |
| |
| • |
| |
| • |
| |
| • |
| |

*Why did you leave home?

| |
|---------------------------------------|
| My family left home for many reasons. |
| • |
| |
| |
| • |
| |
| |
| • |
| |
| |
| • |
| |
| |
| |

Page 5: A Typical Day on the Trail

Assigned to: _____

Use the following as a checklist

- **Essential Questions:**
 - When did you wake up? Breakfast? What did you eat?
 - Chores to start the day/take down camp
 - Method of travel throughout the day
 - Chores during the day
 - Games kids would play throughout the day
 - When did you stop for lunch? Food?
 - When did you stop for dinner? Food?
 - What did you do for fun after dinner?
 - Chores to set up camp?
 - What were some potential dangers? What did you do to keep everyone safe?
 - You can use a daily schedule in addition to your paragraph
- **Ideas for research:**
 - Google “daily routine on the Oregon Trail”
 - Some websites (there are more – make sure you google the above)
 - www.oregontrailcenter.org/HistoricalTrails/ADayOnTheTrail.htm
 - www.nativeamerican.co.uk/emig2.html
 - www.blm.gov/or/oregontrail/education-kids-trail.php
- **Make sure you add a graphic, sketch artifact or printed picture**



Page 6: One hardship Your Family Endured

Assigned to: _____

Use the following as a checklist

- **Essential questions:**
 - What were the consequences to your journey because of the hardship?
 - How did it make you feel? Do you regret the trip? Want to push forward?
 - Choose one or MORE of the following situations to help you answer the essential questions:
 - Accidents or Diseases:
 - Broken wagon: wheels, axels
 - Loss of supplies
 - Problems crossing rivers - drowning
 - Getting over mountains – freezing
 - Injuries/Illnesses – cholera, dysentery, typhus, fevers
 - Attacks
 - Bandits or other pioneer groups
 - Weather Issues
 - Buffalo stampedes
 - Snake bites
 - Coyote attacks
 - Bear Attacks
- **Ideas for research:**
 - Packet pages
 - Google dangers on the Oregon Trail
 - Other websites:
 - www.oregontrailcenter.org/HistoricalTrails/Dangers.htm
 - www.octa-trails.org/learn/trail-facts
 - www.frontiertrails.com/oldwest/oregontrail.htm
- **Make sure you add a graphic, sketch or printed picture!**

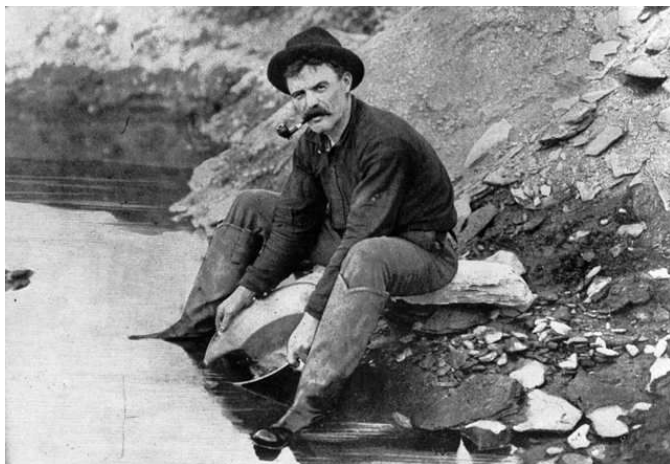


Page 7: One Group of People You Met on the Trail

Assigned to: _____

Use the following as a checklist

- **Essential Questions:**
 - Where did this group go? When did they go?
 - Why did this group move west? What were they looking for?
 - What were they doing? Who did they meet?
 - What hardships, successes or failures did they face?
 - What happened to them?
 - Choose from the following Groups of People to help answer the Essential Questions:
 - Californios
 - Mountain Men
 - Mormons
 - Missionaries
 - Forty-Niners
 - Pioneers in general
 - Donners
 - Sagers
- **Ideas for Research:**
 - Packet Pages
 - Google your Group
- **Make sure to add a graphic, sketch or printed picture!**



Journal Page 7 Rough Draft: One Group of People You Met

Green Introductory Sentence:

| |
|---|
| We met many different groups of people on the Trail. One group stood out from the rest. |
| |

Yellow Star Idea:

*What Group did you meet?

| |
|---|
| Red: Where did this group go? When did they go? |
| |
| |
| |
| |
| |
| Why did this group move west? What were they looking for? |
| What were they doing? Who did they meet? |
| |
| |
| |
| |
| |
| |
| |
| |
| What hardships, successes, or failures did they face? |
| |
| |
| |
| |
| |
| |
| |
| |
| What happened to them? |
| |
| |
| |
| |

Pioneer Journal Group Grade: _____/20

_____ Cover with name and picture

_____ Labeled Wagon – 5 parts

_____ Labeled Map – starting city, ending city, 3 stops, states, States/Territories

_____ List of Supplies and Food with weights

_____ Detailed Description on one stop

- Needed:

Individual Pages: _____/30

| Name Grade | Name Grade | Name Grade | Name Grade |
|--|--|--|--|
| <p>Excellent:</p> <ul style="list-style-type: none"> • Detailed, fact and research based, answered questions, authentic, accurate • No spelling/grammatical errors, clear paragraph structure • Excellent, creative pictures, realia <p>Good:</p> <ul style="list-style-type: none"> • Needed more facts, details, research, answer more questions, accuracy • Spelling/grammatical errors, paragraph structure unclear in places • Good pictures, realia, could have used more effort, <p>Fair/Needed Work:</p> <ul style="list-style-type: none"> • Needed more detail, facts, research, accuracy • Incomplete, did not follow instructions, questions • Spelling/grammatical errors, paragraph structure unclear – hard to follow • Pictures missing or needed more effort | <p>Excellent:</p> <ul style="list-style-type: none"> • Detailed, fact and research based, answered questions, authentic, accurate • No spelling/grammatical errors, clear paragraph structure • Excellent, creative pictures, realia <p>Good:</p> <ul style="list-style-type: none"> • Needed more facts, details, research, answer more questions, accuracy • Spelling/grammatical errors, paragraph structure unclear in places • Good pictures, realia, could have used more effort, <p>Fair/Needed Work:</p> <ul style="list-style-type: none"> • Needed more detail, facts, research, accuracy • Incomplete, did not follow instructions, questions • Spelling/grammatical errors, paragraph structure unclear – hard to follow • Pictures missing or needed more effort | <p>Excellent:</p> <ul style="list-style-type: none"> • Detailed, fact and research based, answered questions, authentic, accurate • No spelling/grammatical errors, clear paragraph structure • Excellent, creative pictures, realia <p>Good:</p> <ul style="list-style-type: none"> • Needed more facts, details, research, answer more questions, accuracy • Spelling/grammatical errors, paragraph structure unclear in places • Good pictures, realia, could have used more effort, <p>Fair/Needed Work:</p> <ul style="list-style-type: none"> • Needed more detail, facts, research, accuracy • Incomplete, did not follow instructions, questions • Spelling/grammatical errors, paragraph structure unclear – hard to follow • Pictures missing or needed more effort | <p>Excellent:</p> <ul style="list-style-type: none"> • Detailed, fact and research based, answered questions, authentic, accurate • No spelling/grammatical errors, clear paragraph structure • Excellent, creative pictures, realia <p>Good:</p> <ul style="list-style-type: none"> • Needed more facts, details, research, answer more questions, accuracy • Spelling/grammatical errors, paragraph structure unclear in places • Good pictures, realia, could have used more effort, <p>Fair/Needed Work:</p> <ul style="list-style-type: none"> • Needed more detail, facts, research, accuracy • Incomplete, did not follow instructions, questions • Spelling/grammatical errors, paragraph structure unclear – hard to follow • Pictures missing or needed more effort |